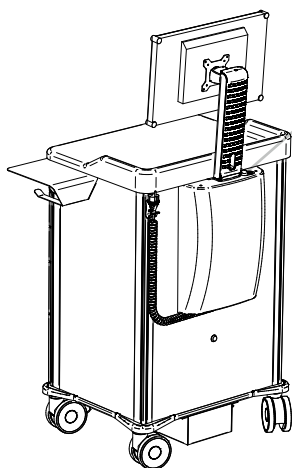




Immediately before any use, connect the Powered Back Pack to the mains with the supplied spiral cable and let the battery charge until the LED indication stops flashing (100%).



The built-in PC can be started with the on-off switch ICT at the rear of the Medicart.

- Briefly press the push button, the white LED lights up and the device is switched on.
- To switch the device off: briefly press the push button again.
- The white LED will now flash and the PC will shut down.
- The device switches off after 30 seconds.
- To force the device and PC to turn off: press and hold the button for 3 seconds.



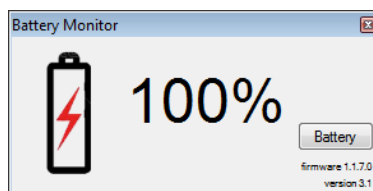
The battery LED indicator remains active even when the main switch is turned off. The LED indicator will only go out if the Medicart is in sleep mode due to low battery.



The USB-controlled lock opens and shuts the Medicart. The way this is done is determined by your system administrator.

Battery status indicator

The low voltage system in the Medicart indicates the battery status using an LED indicator on the back of the cart, and the Battery Monitor application on the desktop of the PC (only if the application has been installed).



The remaining charge in the battery is between 100% and 70%.

The LED flashes when the Medicart is not plugged in to the power socket. **Leave the battery to charge as often as possible until the LED indicator stops flashing.** The battery is then 100% charged.



The remaining charge in the battery is between 69% and 40%.



The remaining charge in the battery is between 39% and 10%.

Repeated use of the Medicart with a battery charge of 30% or less reduces the life of the battery considerably.



The remaining charge in the battery is less than 10% when the LED is flashing red.

Plug the Medicart immediately into the power socket and leave the battery to charge to 100%!



When the battery charge has fallen to 5%, this pop-up will appear. A few minutes later, the PC will shut down and the LED indicator will go out. The Medicart has gone into sleep mode.

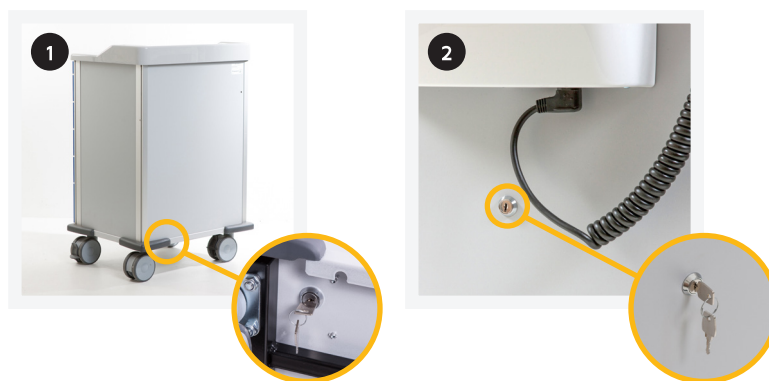
Plug the Medicart immediately into the power socket and leave the battery to charge to 100%!

» Emergency opening

If the lock no longer opens, the emergency opening can be used. To do so, use the key delivered with the product and the lock on the Medica[®]rt.

1. Old system

2. New system



Careful: the emergency opening can only be used if the lock is defective.
When the lock is in working order again, the emergency opening must be closed.

» Important guidelines for the daily use of the Medica[®]rt

- Adapt your speed to the immediate circumstances when moving the cart. To retain control over the cart in unexpected situations, it should never be moved at more than normal walking pace (4 to 5 km/h).
- Ensure that there are no loose objects on the cart while moving it.
- Ensure that the cable connector has been unplugged before you move the Medica[®]rt. Never pull on the lead. Hold the plug itself rather than the lead when disconnecting the mains lead.
- **Plug the Medica[®]rt into the power socket as often as possible. Charge the battery up to 100% each day.**

For complete instructions, consult the Instructions for Use supplied with the Medica[®]rt or go to the Download Centre through www.belintra.com/en/downloads.